



## Product Information

### Key Features

- Plot real-time network graphs
- Execute SNMP management functions
- Directly access devices and network tools
- Search network events by device or keyword
- Capture and automate senior-level technical expertise

### Real-Time Network Graphs

QuickView makes it possible to plot real-time network graphs with only a few mouse-clicks. These graphs include depictions of network and device traffic, errors, discards, and utilization. By providing views of current network behavior, QuickView's graphs can be used during troubleshooting, permitting network operators to test different diagnostic and resolution scenarios.

### Navigating Network Management Software

Most network management systems (such as Tivoli's NetView and Hewlett-Packard's OpenView Network Node Manager) contain graphical user interfaces (GUIs) that are difficult and time-consuming for network operators to use. These systems have a plethora of menus, tools, and applications, which presents hurdles to new, or even experienced, IT staff. Further complications arise with the addition of other vendors' network management software. Consequently, IT staff often find it difficult to quickly navigate to the most useful areas of their diverse network management software.

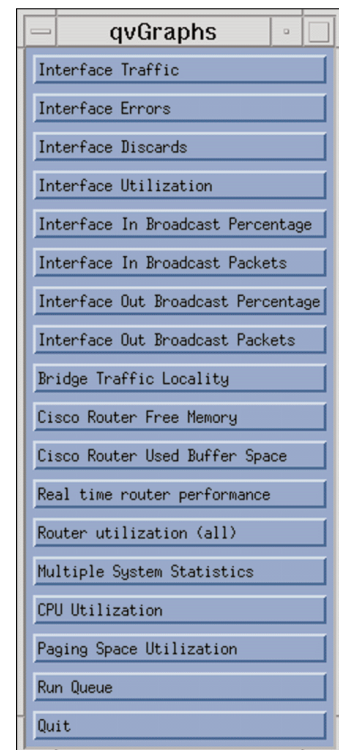
### Tavve's QuickView™

Introducing QuickView, a self-configuring menu application that provides quick and easy access to essential network management software. QuickView automatically integrates with the existing network management system (NMS) as well as with other vendors' software. QuickView enables network operators of any skill level to quickly access their most important NMS troubleshooting tools from a single, easy-to-use menu.

QuickView significantly reduces staff training costs because it enables users to learn only one, simplified interface instead of the complex NetView/OpenView interfaces. QuickView's ease of use, combined with its focused access to key tools, make it an essential element of any network management toolset.

### How It Works

Upon installation, QuickView automatically generates a set of NMS menus and presents them using the X Window System. If QuickView detects other vendors' software, it generates menu options for that software as well. QuickView's menus can be displayed on any system running the X Window System, including remote PCs and NMS consoles. Because QuickView uses only a fraction of the resources required by the NMS GUIs, it runs easily on most workstations.

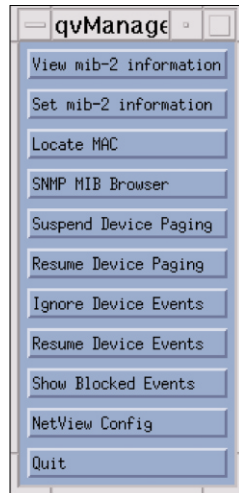


Graphs Menu

## SNMP Management Functions

QuickView contains options for executing a number of commonly used SNMP network management functions. These include the ability to:

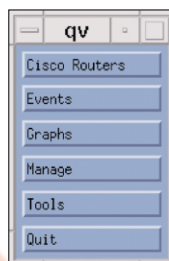
- **View and set MIB-2 information on particular devices (i.e., hardware/ software revision level, physical location, and contact personnel)**
- **Determine MAC addresses and locations (especially useful for large bridged or switched network segments)**
- **Browse MIB variables on any SNMP-enabled device**
- **Manually suspend and resume paging for devices currently being serviced**



Manage Menu

## Direct Access to Network Devices and Tools

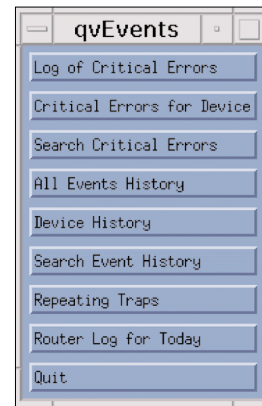
QuickView provides direct access to a variety of network tools used by network support staff to manage their devices. These include the Web browser, terminal window command shells such as xterm, device-level managers like Optivity, and peer network management stations. QuickView enables staff to launch device-level management and device-specific tools without having to navigate through IP submaps. QuickView also gives users the ability to view specific devices sorted by vendor type. QuickView's menus can be reused to create different sets of menus tailored to different support groups.



Main Menu

## Other Features

With QuickView, users can search through network events by device name or keyword. QuickView displays repeating traps, router log files, and log files of critical errors. QuickView enables organizations to maximize their IT investments by capturing senior-level technical expertise as menu options which can then be reused whenever needed.



Events Menu

## Platform Requirements

- **NetView running on IBM AIX or Sun Solaris**
- **Hewlett-Packard OpenView Network Node Manager running on HP-UX or Sun Solaris**

**For More Information Contact:**

**Tavve Software Company**

**One Copley Parkway ■ Morrisville, NC 27560**

**919.460.1789 ■ fax 919.380.7147 ■ www.tavve.com**